

Farmers Electric Cooperative

A Touchstone Energy Cooperative

301 N. Hillcrest
Sulphur Springs, TX 75482

2000 I-30 E
Greenville, TX 75402

108 W. Marble
Wylie, TX 75098

August 7, 2017

Office of Hopkins County Judge
The Honorable Robert Newsom
Post Office Box 288
Sulphur Springs, TX 75483

Farmers Electric Cooperative Member: Bruce Millard, Jr
Service Order Number: 1707005250

Dear Judge Newsom,

Farmers Electric Cooperative, Inc. is requesting permission to re-route existing electrical power distribution facilities across County Road 4759, which is located approximately 1274 feet north of County Road 4758, in Hopkins County, Texas.

Site location map and construction sketches are enclosed. The construction sketch details the proposed work. All road crossing will have a minimum vertical clearance of 22 feet.

If you have any questions, please contact your field engineering representative Matt Walker at 903-441-1368 mobile.

Please send approval back to our engineering group at: EngCC@farmerselectric.coop

Sincerely,

Matt Walker

Engineering Assistant
mwalker@farmerselectric.coop

Enclosures

Submitted by:
Tricia Griffin
Field Engineering Coordinator
Office: 903-453-0563 Fax: 903-453-0663
tgriffin@farmerselectric.coop

Approved Denied

Date: 8-14-17

County Comments: _____



County Road 4758

BRUCE MILLARD JR
S/O #1707005250
POLE #107716



HOPKINS

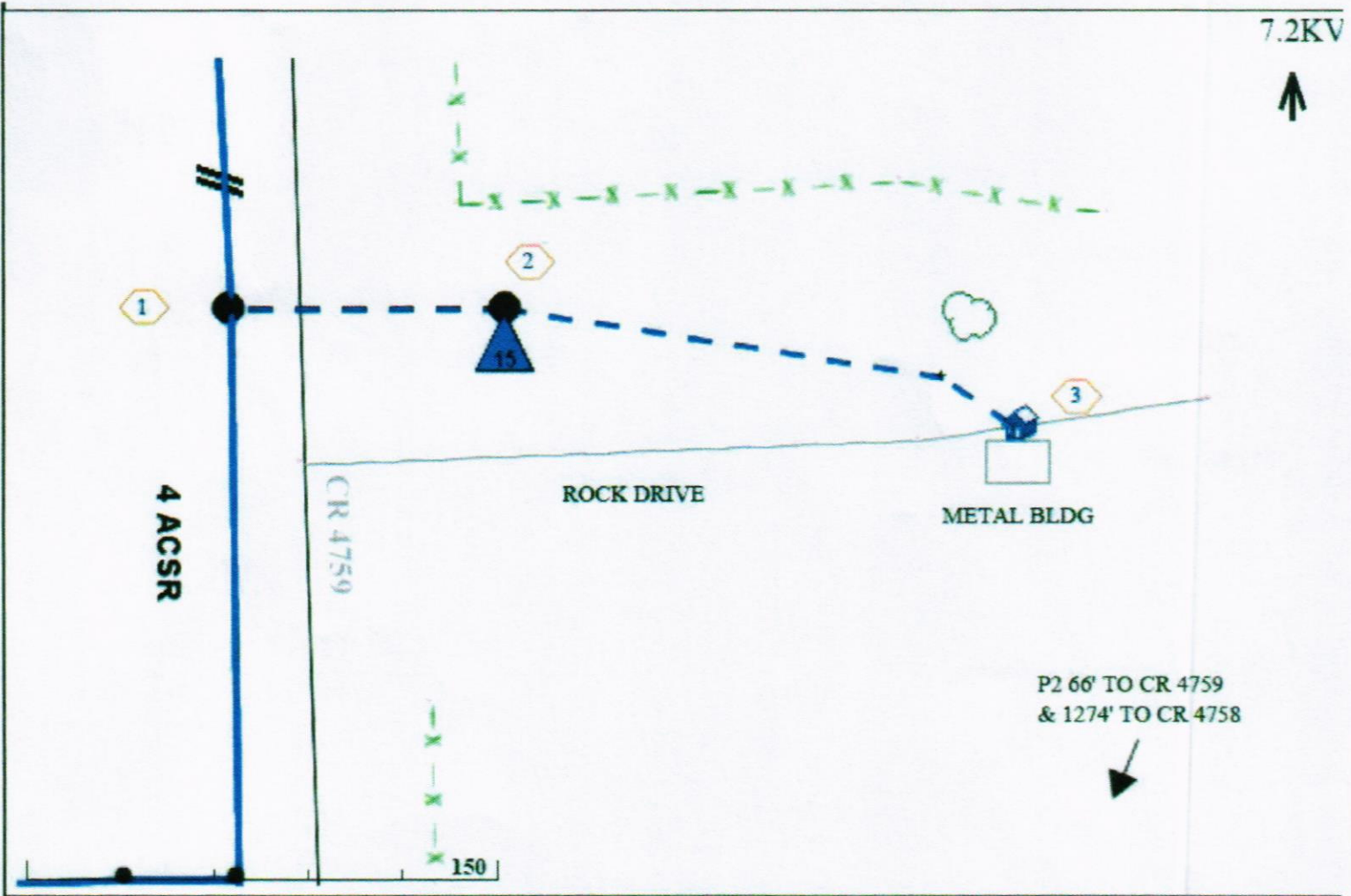
County Road 4758

County Road 4758

County Road 4758

1000 ft

7.2KV



1

2

3

4 ACSR

CR 4759

ROCK DRIVE

METAL BLDG

P2 66' TO CR 4759
& 1274' TO CR 4758

150